

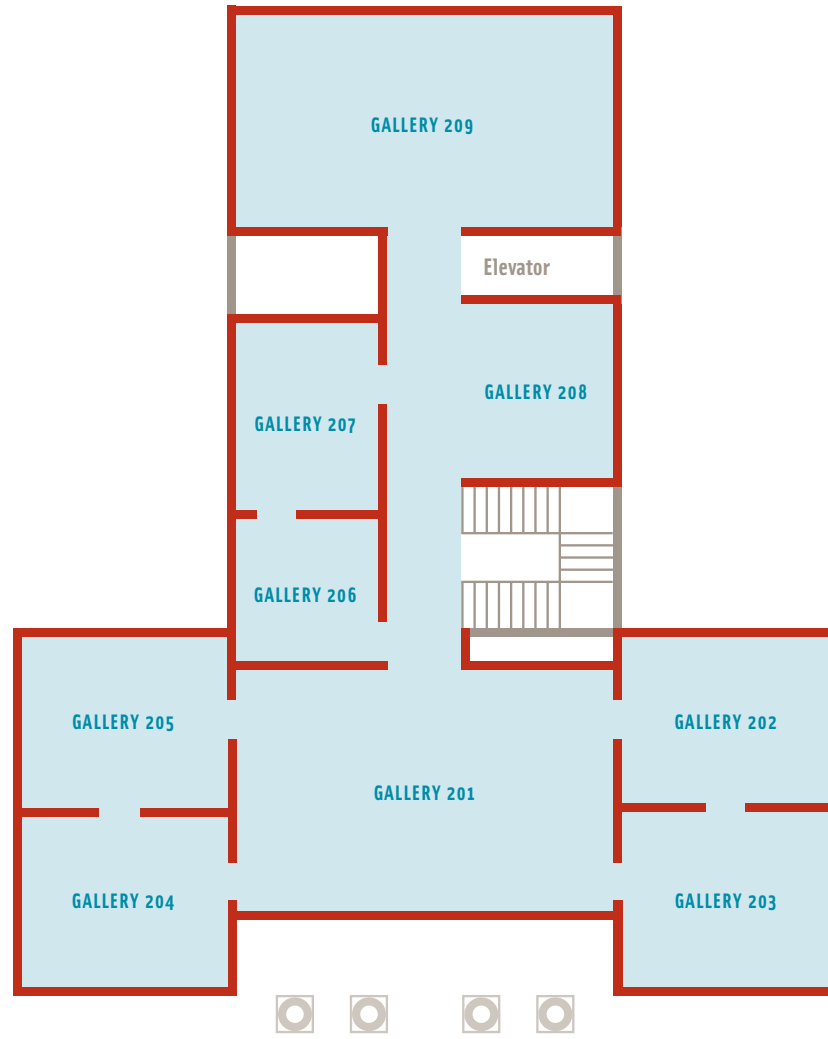
**LEVEL 2**

**GALLERIES 201–205**

**CURRENTS/CROSSCURRENTS:**  
AMERICAN ART 1850–1950

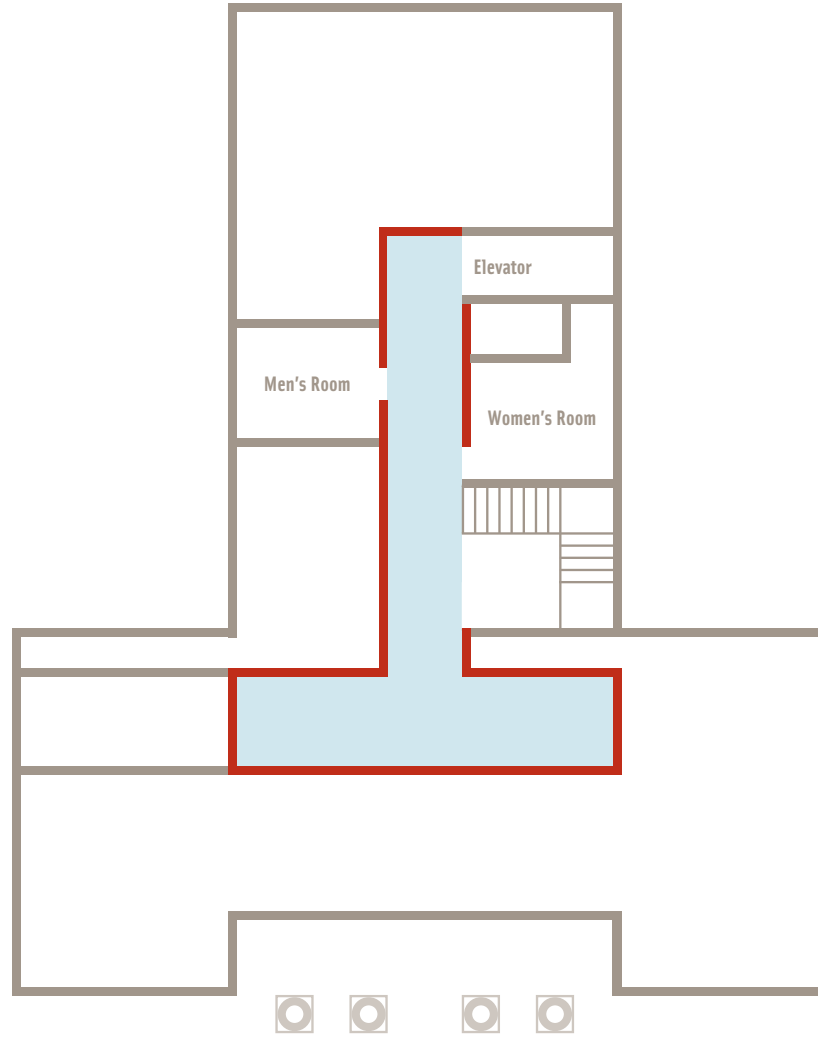
**GALLERIES 206–209**

**WAYFINDING:**  
CONTEMPORARY ARTISTS,  
CRITICAL DIALOGUES,  
AND THE SIDNEY R. KNAPFEL  
MAP COLLECTION



**LEVEL G**

**MODEL SHIP COLLECTION**



**CURRENT EXHIBITIONS**

**LEVEL 1**

**GALLERIES 102–105**  
**ROBERT FRANK: THE AMERICANS**

**GALLERY 109**  
**YOKO ONO: MEND PIECE**

**APHRODITE DESIREE NAVAB:**  
LANDMINES OF MEMORY

**MUSEUM LEARNING CENTER**  
**AN INCOMPLETE HISTORY OF PHOTOGRAPHY:**  
1860s TO 1960s

**EXHIBITION HALL**  
**APHRODITE DESIREE NAVAB:**  
LANDMINES OF MEMORY

**LEVEL 2**

**GALLERIES 201–205**  
**CURRENTS/CROSSCURRENTS:**  
AMERICAN ART 1850–1950

**GALLERIES 206–209**  
**WAYFINDING:** CONTEMPORARY ARTISTS,  
CRITICAL DIALOGUES, AND THE SIDNEY R. KNAPFEL  
MAP COLLECTION

**LEVEL G**

**THE ADDISON'S MODEL SHIP COLLECTION**

**GALLERY HOURS**

Friday and Saturday 10–5, Sunday 1–5

The museum is wheelchair accessible. The Addison is open to the public and free of charge.

Addison Gallery of American Art | Phillips Academy  
Andover, MA 01810 978.749.4015  
www.addisongallery.org

**LEVEL 1**

**GALLERIES 102-105**

**ROBERT FRANK: THE AMERICANS**

**GALLERY 109**

**YOKO ONO: MEND PIECE**

**APHRODITE DESIREE NAVAB:  
LANDMINES OF MEMORY**

**MUSEUM LEARNING CENTER**

**AN INCOMPLETE HISTORY  
OF PHOTOGRAPHY:  
1860s TO 1960s**

**EXHIBITION HALL**

**APHRODITE DESIREE NAVAB:  
LANDMINES OF MEMORY**



**PUBLIC PROGRAMS: WINTER 2021**

**VIRTUAL GALLERY TALK SERIES:**

**CURRENTS/CROSSCURRENTS: AMERICAN ART 1850-1950 WITH GORDON WILKINS**

In this three-part series, Curator Gordon Wilkins will explore works from the exhibition by time period. Organized chronologically, *Currents/Crosscurrents* places iconic paintings, photographs, works on paper, and sculptures in dialogue with works by and lesser-known and unknown artists. These free programs are presented via Zoom in conjunction with Andover's Memorial Hall Library; registration is required ([mhl.org/events](http://mhl.org/events)).

**PART 1: 1850-1900**

Wednesday, January 27, 2:00 pm

**PART 2: 1900-1930**

Wednesday, February 10, 2:00 pm

**PART 3: 1930-1950**

Wednesday, February 17, 2:00 pm

**MINDFUL OBSERVATION EXPERIENCE**

Join us virtually for a mindful observation experience focused on finding ground within unpredictability. This deep seeing experience uses artworks, the body, and breath to help you unwind and relax into the present moment with the amplified impact of group meditation. No prior experience is necessary. Come away with tools for stress relief, new awareness, and a deepened sense of community. Led by India Clark, Museum Mindfulness Guide & Life Path Mentor for Creative Souls; Founder of the Wayfinder Institute. Sponsored with the Tang Institute at Andover.

This workshop is free, but space is limited and advance signup is required.

**Sunday, February 28, 11:00 am-12:00 pm**

All programs are free and open to the public unless otherwise noted. Registration is required for some programs; please see our website or call 978.749.4015 for more details about each program.