

ADDISON

Addison Gallery of American Art

Georgia O'Keeffe, *Photographer*

February 26–June 12, 2022

Image Highlights and Credit Lines

Georgia O'Keeffe, Photographer is organized by the Museum of Fine Arts, Houston, with the collaboration of the Georgia O'Keeffe Museum, Santa Fe.

For high-resolution images, please contact Rebecca Mongeon at rmongeon@andover.edu



Georgia O'Keeffe, *Jimsonweed (Datura stramonium)*, 1964–68, black-and-white Polaroid, Georgia O'Keeffe Museum, Santa Fe. © Georgia O'Keeffe Museum



Todd Webb, *Georgia O'Keeffe with Camera*, 1959, printed later, inkjet print, Todd Webb Archive. © Todd Webb Archive, Portland, Maine, USA



Georgia O'Keeffe, *Chrysler Building from the Window of the Waldorf Astoria, New York*, c. 1960, gelatin silver print, Georgia O'Keeffe Museum, Santa Fe. © Georgia O'Keeffe Museum



Georgia O'Keeffe, *Ladder against Studio Wall with White Bowl*, 1959–60, gelatin silver print, Georgia O'Keeffe Museum, Santa Fe. © Georgia O'Keeffe Museum



Georgia O'Keeffe, *Ladder against Studio Wall with Black Chow (Bo-Bo)*, 1959–60, gelatin silver print, Georgia O'Keeffe Museum, Santa Fe. © Georgia O'Keeffe Museum



Georgia O'Keeffe, *Wai'anapanapa Black Sand Beach*, March 1939, gelatin silver print, Georgia O'Keeffe Museum, Santa Fe. © Georgia O'Keeffe Museum



Georgia O'Keeffe, *Sugar Cane Fields and Clouds*, March 1939, gelatin silver print, Georgia O'Keeffe Museum, Santa Fe. © Georgia O'Keeffe Museum



Georgia O'Keeffe, *Big Sage (Artemisia tridentata)*, 1957, gelatin silver print, Georgia O'Keeffe Museum, Santa Fe. © Georgia O'Keeffe Museum



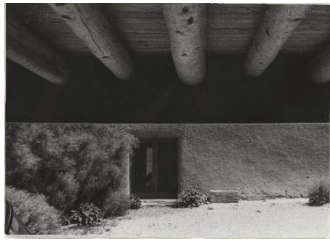
Georgia O'Keeffe, *Salita Door*, 1956–57, gelatin silver print, Georgia O'Keeffe Museum, Santa Fe. © Georgia O'Keeffe Museum



Georgia O'Keeffe, *Salita Door, Patio*, 1956–57, gelatin silver print, Metropolitan Museum of Art, New York. Anonymous Gift, 1977. © 2022 Georgia O'Keeffe Museum / Artists Rights Society (ARS), New York



Georgia O'Keeffe, *Ladder against Wall*, 1961, gelatin silver print, Georgia O'Keeffe Museum, Santa Fe. © Georgia O'Keeffe Museum



Georgia O'Keeffe, *Garage Vigas and Studio Door*, July 1956, gelatin silver print, Metropolitan Museum of Art, New York. Anonymous Gift, 1977. © 2022 Georgia O'Keeffe Museum / Artists Rights Society (ARS), New York



Georgia O'Keeffe, *Road from Abiquiú*, 1959–66, gelatin silver print, Georgia O'Keeffe Museum, Santa Fe. © Georgia O'Keeffe Museum



Georgia O'Keeffe, *North Patio Corridor*, 1956–57, gelatin silver print, Georgia O'Keeffe Museum, Santa Fe. © Georgia O'Keeffe Museum



Georgia O'Keeffe, *Forbidding Canyon, Glen Canyon*, September 1964, black-and-white Polaroid, Georgia O'Keeffe Museum, Santa Fe. © Georgia O'Keeffe Museum



Georgia O'Keeffe, *Forbidding Canyon, Glen Canyon*, September 1964, black-and-white Polaroids, Georgia O'Keeffe Museum, Santa Fe. © Georgia O'Keeffe Museum



Georgia O'Keeffe, *Roofless Room*, 1959–60, gelatin silver print, Georgia O'Keeffe Museum, Santa Fe. © Georgia O'Keeffe Museum



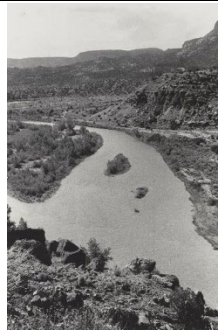
Georgia O'Keeffe, *Ladder against Studio Wall in Snow*, 1959–60, gelatin silver print, Georgia O'Keeffe Museum, Santa Fe. © Georgia O'Keeffe Museum



Georgia O'Keeffe, *Bo II (Bo-Bo)*, 1961, gelatin silver print, Georgia O'Keeffe Museum, Santa Fe. © Georgia O'Keeffe Museum



Georgia O'Keeffe, *Road out Bedroom Window*, likely 1957, gelatin silver print, Metropolitan Museum of Art, New York. Anonymous Gift, 1977. © 2022 Georgia O'Keeffe Museum / Artists Rights Society (ARS), New York



Georgia O'Keeffe, *Chama River*, 1957–63, gelatin silver print, Georgia O'Keeffe Museum, Santa Fe. © Georgia O'Keeffe Museum



Georgia O'Keeffe, *Skull, Ghost Ranch*, 1961–72, chromogenic print, Georgia O'Keeffe Museum, Santa Fe. © Georgia O'Keeffe Museum